

LONG DISTANCE SAILING INSTRUCTIONS

- There will be a “Long-distance/Marathon” – “Mandatory briefing” on – 10:15 am
- Start is scheduled at 11:00am

1. THE START

1.1 Race will be started according to WCR 26.

SIGNAL & FLAG - Meaning	Time to go
Attention signal - WINDSURFER CLASS FLAG -	
Preparation signal - Black” FLAG	4”
Last Minute signal	1”
Start	0

1.2. The starting line will be between 2 boats displaying orange flags.



1.3. A board starting later than 3 minutes after her starting signal will be scored Did Not Start (DNS) without a hearing. This changes WCR A4 and A5.

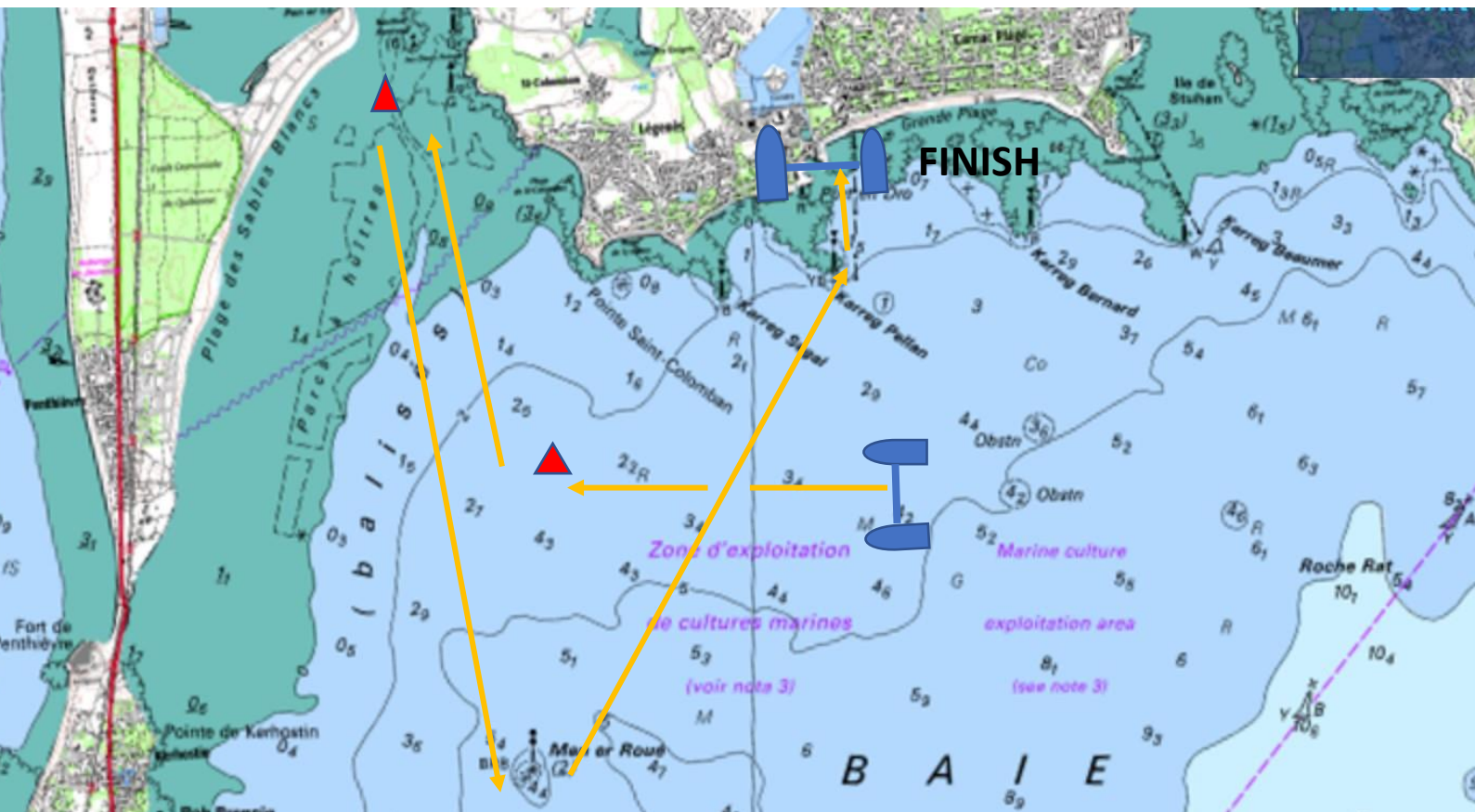
1.4 To alert boards that a race will begin soon, an orange flag will be displayed with one sound signal for at least three (3) minutes before a warning signal is displayed

2. MARKS

- Course marks – Red buoy
- Start mark – Between 2 Race Committee boats
- Finish mark – Between two boats with blue flag.

3. THE COURSE

Marathon long course – Pennant 1



Marathon long course - Pennant 2



4. SCORING

Appendix B will apply.

For each category, results will be extrapolated from the single scoring.

RACE OFFICERS

CHAIRMAN RACE COMMITTEE

JEAN LUC BORT

CHAIRMAN JURY:

BRUNO GUTIERREZ