

# International Moth European Championship

## Carnac - ENVSN 23<sup>rd</sup> to 29<sup>th</sup> July 2022

**The Organising Authority is the Carnac Yacht Club in conjunction with the ENVSN and the International and FR Moth Class Association.**

## SAILING INSTRUCTIONS

[NP] denotes a rule that shall not be grounds for protests by a boat. This changes RRS 60.1(a).

[DP] denotes a rule for which the penalty is at the discretion of the Protest Committee.

[SP] denotes a rule for which a standard penalty may be applied by the Race Committee without a hearing or a discretionary penalty applied by the Protest Committee with a hearing.

### 1. RULES

- 1.1 The regatta will be governed by the rules as defined in *The Racing Rules of Sailing*.
- 1.2 The Class Rules will apply except for any that are altered by the Notice of Race or the Sailing Instructions. The Class Race Management Guidelines will also apply, but a failure to follow these Guidelines is not on its own grounds for redress. This changes RRS 62.1(a).
- 1.3 National prescriptions, translated for non French-speaking competitors, in appendix C,
- 1.4 [NP][DP][SP] FFVoile regulations including the technical and safety regulations for foiling supports, in appendix D. That means a FPD and a helmet shall be worn in competition, from departure until the return ashore.
- 1.5 Due to water state restrictions, washing equipments and clothes is forbidden on the slipway.

### 2. CHANGES TO SAILING INSTRUCTIONS

Any change to the sailing instructions will be posted not less than one hour before the scheduled warning signal on the day it will take effect, except that any change to the timing of races, will be posted by 2100 the day before it will take effect.

### 3. COMMUNICATIONS WITH COMPETITORS

- 3.1 The official notice board is located at:  
<https://www.manage2sail.com/fr-FR/event/moth22#!/>

3.2 Competitor WhatsApp group: <https://chat.whatsapp.com/GSFljdsaX9q6XeAUVms2ih>

#### 4. SIGNALS MADE ASHORE

4.1 Signals made ashore will be displayed at the flagpole close to the slipway.

4.2 [DP][NP] Flag D displayed ashore with one sound signal this means: “the warning signal will be made not less than 60 minutes after flag D is displayed or not before the scheduled time, whichever is later”. Boats shall not leave the slipway until this signal is made.

#### 5. SCHEDULE OF EVENTS

|     |                                 |               |                     |
|-----|---------------------------------|---------------|---------------------|
| 5.1 | Saturday 23 <sup>rd</sup> July  | 11.00 – 12.00 | Registration        |
|     |                                 | 14.00 – 18.00 | Registration        |
|     | Sunday 24 <sup>th</sup> July    | 12.30         | Competitor Briefing |
|     |                                 | 14.00         | Practice Race       |
|     | Monday 25 <sup>th</sup> July    | 11.00         | 4 races             |
|     | Tuesday 26 <sup>th</sup> July   | 11.00         | 4 races             |
|     | Wednesday 27 <sup>th</sup> July | 11.00         | 4 races             |
|     | Thursday 28 <sup>th</sup> July  | 11.00         | 4 races             |
|     | Friday 29 <sup>th</sup> July    | 11.00         | 4 races             |

As soon as possible after racing Prize Giving and Closing Ceremony

5.2 On Friday 28<sup>th</sup> July there will be no warning signal after 16.00.

#### 6. CLASS FLAGS

The class flag will be a Moth class insignia on a white background.

#### 7. RACING AREAS

Attachment B shows the location of the racing area.

#### 8. THE COURSE

8.1 Attachment A shows the course to be sailed, the order in which the marks are to be passed, the side on which each mark is to be left, and the signals indicating the number of rounds to be sailed. The course will be displayed on the Race Committee signal boat.

8.2 No later than the warning signal, the Race Committee signal boat will display the approximate compass bearing from the race committee boat to Mark 1 gate or Mark 1 if using course LA.

#### 9. MARKS

|                 |                                     |
|-----------------|-------------------------------------|
| Mark 1, 1P, 1S  | red tetrahedral                     |
| Mark 1A         | red tetrahedral                     |
| Mark 2P/2S      | orange tetrahedral                  |
| Change mark     | yellow tetrahedral                  |
| Starting marks  | Race Committee boats                |
| Finishing marks | Race Committee boat and yellow mark |

#### 10. THE START

10.1 The starting line will be between staffs displaying orange flags on the starting marks (race committee starting vessels) at each end of the starting line.

- 10.2 To alert boats that a race or sequence of races will begin soon, the orange starting line flag will be displayed with 1 sound signal not less than 2 minutes before the warning signal is displayed.

## 11. CHANGE OF COURSE

- 11.1 To change the next leg of the course, the race committee will lay a change mark, which will be as detailed in SI 9. When a new mark is laid, the original marks will be removed as soon as possible.
- 11.2 If course L is used and the windward gate is changed, a single new mark will be laid to be rounded to port. If course LA is used Marks 1 and 1A will be replaced by a single mark to be rounded to port.

## 12. THE FINISH

- 12.1 The finishing line will be between the staff displaying a blue flag on the Race Committee signal boat and a yellow mark.
- 12.2 **Grand Prix finish** - When the leading boat completes the course and finishes, the Race Committee signal boat at the finish will immediately display a Yellow flag with a sound signal. The Yellow flag will be removed at the end of the finishing window time limit.
- All boats that;
- a) have completed a lap before the chequered flag is displayed, but then fail to finish while it is displayed, or,
  - b) cross the finishing line while the chequered flag is displayed,
- shall be deemed to have finished irrespective of the number of laps completed. Their positions in the race will be based on the order when they either completed their last lap or finished, with those having completed more laps finishing ahead of those with fewer laps. This changes RRS 28.1 and A4.

## 13. TIME LIMITS

- 13.1 A boat that does not start within than 4 minutes after her starting signal will be scored "Did Not Start" (DNS) without a hearing. This changes RRS A5.1 and A5.2.
- 13.2 Target time is 25 minutes. Failure to meet the race target time will not be grounds for redress. This changes RRS 62.1(a).
- 13.3 The finishing window is 15 minutes.
- 13.4 Boats failing to complete one lap earlier than 15 minutes after the first boat sails the course and finishes shall be scored Did Not Finish without a hearing. This changes RRS 35, A4 and A5.

## 14. PENALTY SYSTEM

- 14.1 RRS 44.1 and RRS P2.1 are changed so that the Two-Turns penalty is replaced by a One-Turn penalty.
- 14.2 RRS P2.3 does not apply and RRS P2.2 is changed so that it applies to any penalty after the first one.
- 14.3 The penalty for a breach of a Class Rule will be a Discretionary Penalty [DP] and may be less than disqualification

## 15. PROTESTS AND REQUESTS FOR REDRESS

- 15.1 Protest forms are available online at:  
<https://www.manage2sail.com/fr-FR/event/moth22#!/>

Protests and requests for redress or reopening shall be delivered there within the protest time limit.

- 15.2 The protest time limit shall be posted on:  
<https://www.manage2sail.com/fr-FR/event/moth22#!/>  
The protest time limit will be 90 minutes after the last boat has finished the last race of the day, or the race committee signals no more racing today, whichever is later. The same time limit applies to protests by the race committee and protest committee about incidents they observe in the racing area. This time limit also applies to requests for redress. This changes RRS 61.3 and 62.2.
- 15.3 Notices will be posted within 15 minutes of the protest time limit to inform competitors of hearings in which they are parties or named as witnesses. Hearings will be held in the protest room located at the ENVSN. Hearings may start before the scheduled time with the agreement of all parties.
- 15.4 The race committee or protest committee intending to protest a boat under RRS 60.2 or 60.3 will comply with RRS 61.1(b) by informing her by posting a notice before the end of the protest time limit.
- 15.5 On the last scheduled day of racing a request for redress from a protest committee decision shall be delivered no later than 30 minutes after the decision was posted. This changes RRS 62.2.

## 16. SCORING

- 16.1 The Low Points Scoring System of RRS Appendix A will apply.
- 16.2 5 races are required to be completed to constitute a valid Championship.
- 16.3 When fewer than 6 races have been completed, a boat's score will be the total of her race scores.
- 16.4 When from 6 to 9 races have been completed, a boat's series score will be the total of her race scores excluding her worst score.
- 16.5 When 10 races or more have been completed, a boat's series score will be the total of her race scores excluding her two worst scores.

## 17. SAFETY [DP][NP][SP]

- 17.1 Boats intending to race shall sign out and sign in each race day. To sign out, the sign corresponding to the boat's sail number shall be collected from the board located in the boat park. To sign in, this sign shall be returned to the board within the protest time limit. For each breach of this rule, a 3-point penalty shall be applied to the boat's overall championships score.
- 17.2 Boats not leaving the shore for the day's races shall notify the race office as soon as possible.
- 17.3 A boat that retires from a race shall notify the race committee as soon as possible.
- 17.4 When Flag V is displayed by the race committee signal vessel, coach and other support boats shall collaborate with the race committee in rescue tasks.

## 18 EQUIPMENT AND MEASUREMENT CHECKS

- 18.1 Any boat or equipment may be checked for compliance with the Class Rules and the Sailing Instructions at any time.
- 18.2 [DP][NP] Limitations of equipment - only measured equipment shall be used:
- 1) A maximum of 2 sails shall be used during the regatta.
  - 2) A maximum of 2 masts, 2 rudders and 2 foils / horizontals shall be used during the regatta.
  - 3) Foils shall only be changed whilst ashore at ENVSN.

18.3 A competitor shall submit a request a change of equipment online at:  
<https://measurement.moth-sailing.org/>

18.4 The sticker provided by the Organising Authority must be displayed at the bow.

#### **19. SUPPORT VESSELS [DP][NP]**

Coaches and other support personnel shall not be in the area where boats are racing or within 50 metres of any boat racing from the time of the preparatory signal until all boats have finished or the race committee signals a postponement, general recall or abandonment. This SI does not apply during rescue operations.

#### **20. TRASH DISPOSAL**

As sailors, we seek to protect and restore our oceans and coastal waters. Trash may be placed aboard support and race committee boats.

#### **21. RADIO COMMUNICATION [DP][NP]**

A boat shall neither make radio transmissions while racing nor receive radio communications not available to all boats. This restriction also applies to mobile telephones.

#### **22. PRIZES**

The Organising Authority will provide prizes as stated in the Notice of Race.

#### **23. RISK STATEMENT**

RRS 3 of the Racing Rules of Sailing states: “The responsibility for a boat’s decision to participate in a race or to continue racing is hers alone.”

Sailing is by its nature an unpredictable sport and therefore inherently involves an element of risk. By taking part in the event, each competitor agrees and acknowledges that:

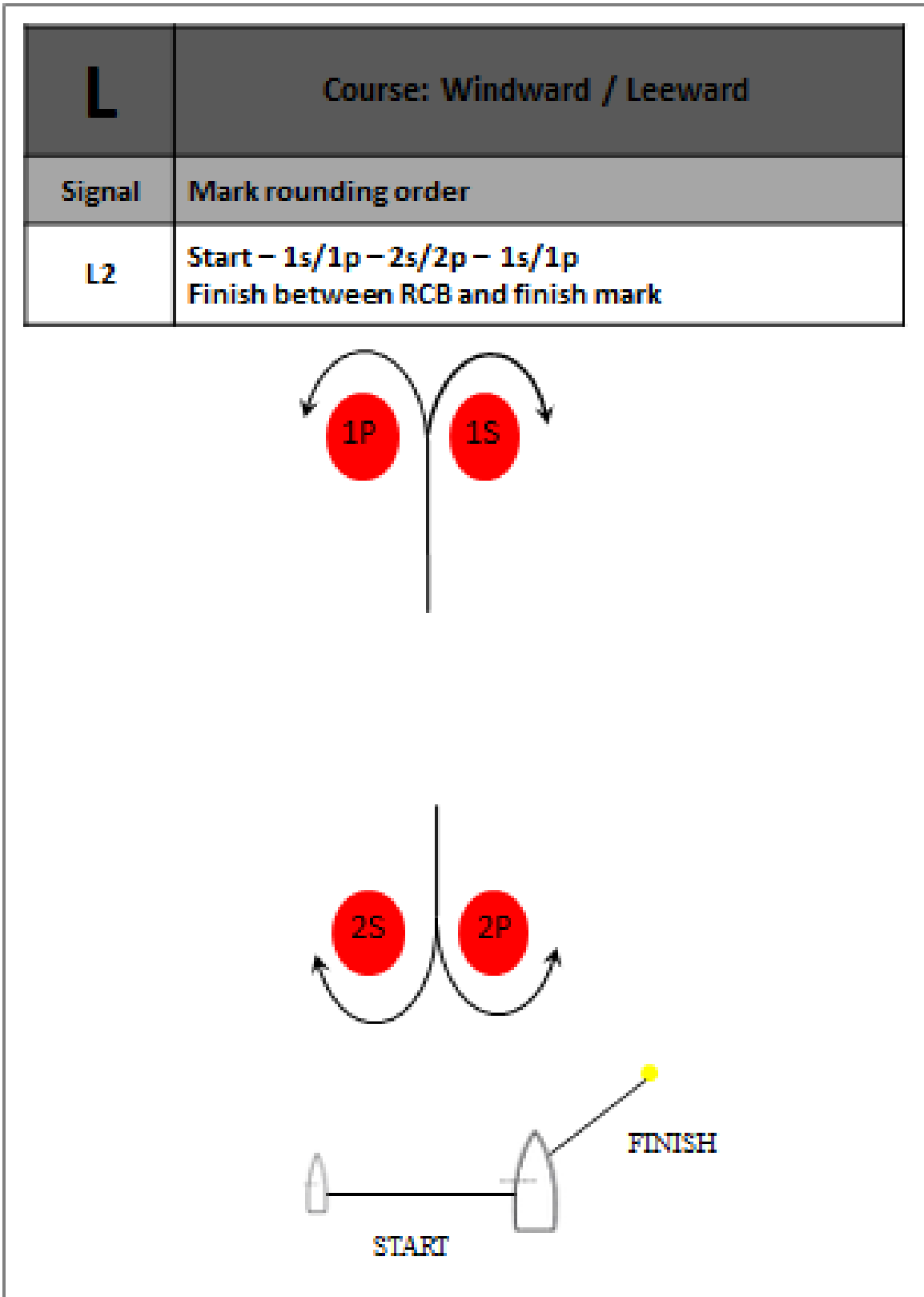
- a) They are aware of the inherent element of risk involved in the sport and accept responsibility for the exposure of themselves, their crew and their boat to such inherent risk whilst taking part in the event;
- b) They are responsible for the safety of themselves, their crew, their boat and their other property whether afloat or ashore;
- c) They accept responsibility for any injury, damage or loss to the extent caused by their own actions or omission;
- d) Their boat is in good order, equipped to sail in the event and they are fit to participate;
- e) The provision of a race management team, patrol boats and other officials and volunteers by the event organiser does not relieve them of their own responsibilities;
- f) The provision of patrol boat cover is limited to such assistance, particularly in extreme weather conditions, as can be practically provided in the circumstances;
- g) It is their responsibility to familiarise themselves with any risks specific to this venue or this event drawn to their attention in any rules and information produced for the event and to attend any competitors briefing held for this event.

#### **24. INSURANCE [DP][NP]**

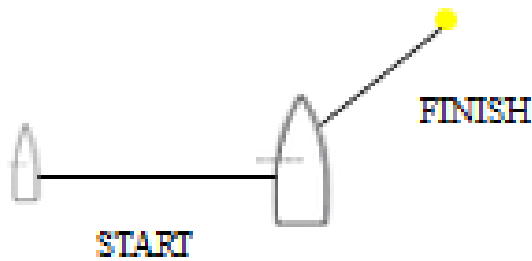
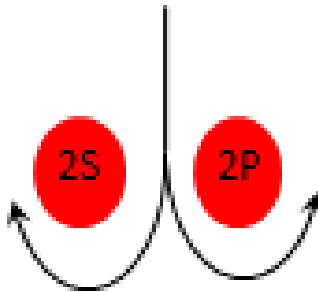
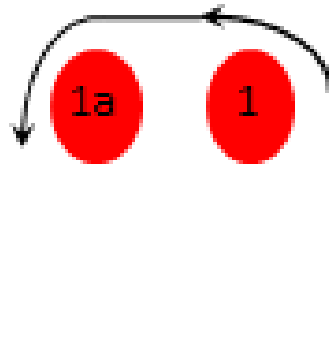
Each participating boat shall be insured with valid third-party liability insurance with a minimum cover of € 2,000,000 or the equivalent per incident.

Attachment A

Course Diagram

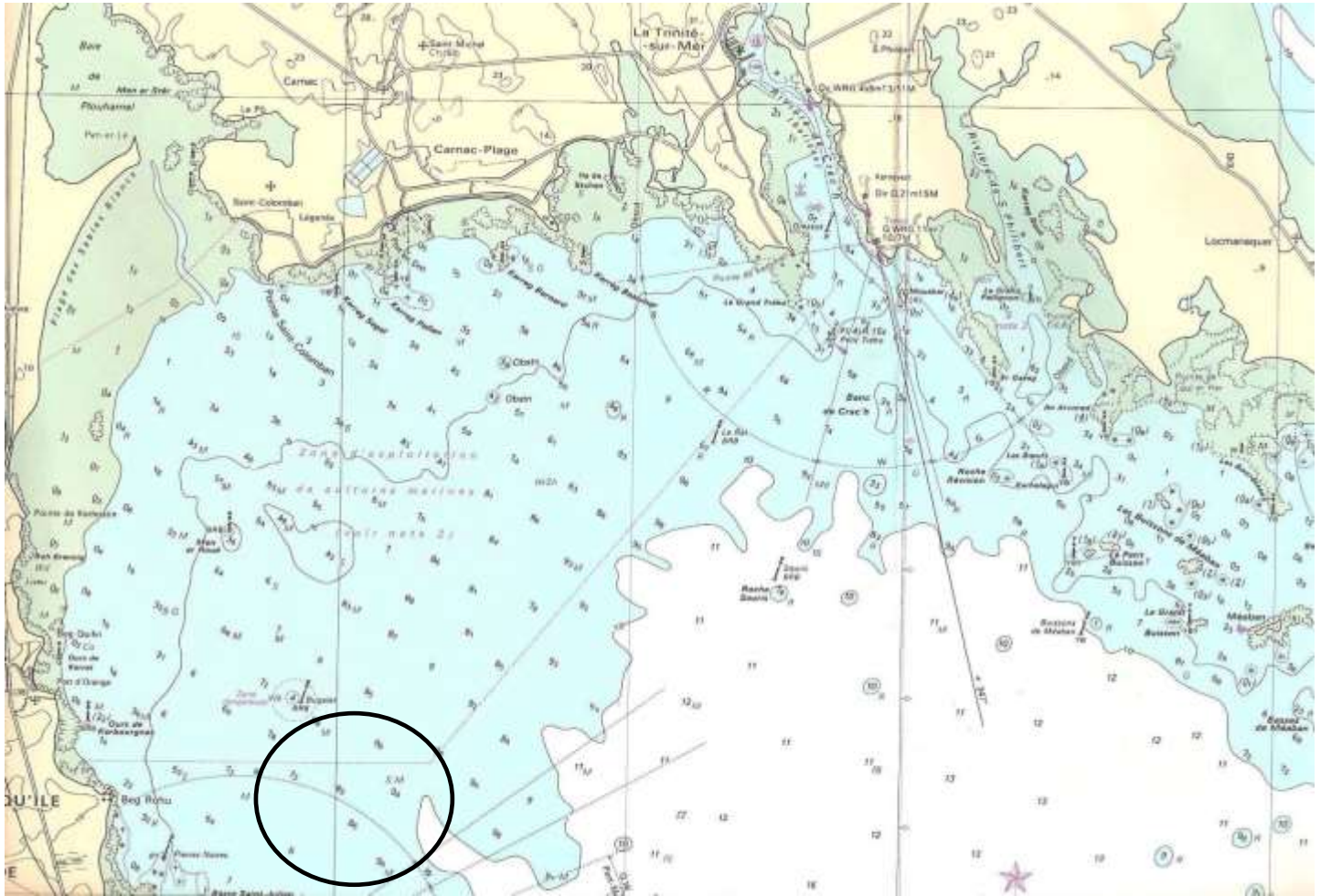


|               |   |
|---------------|---|
| <b>LA</b>     | <b>Course: Windward / Leeward<br/>with offset mark</b>                        |
| <b>Signal</b> | <b>Mark rounding order</b>  |
| <b>LA2</b>    | <b>Start - 1 - 1a - 2s/2p - 1 - 1a<br/>Finish between RCB and finish mark</b> |



# Attachment B

# Course Location





## Attachment C

## “NATIONAL PRESCRIPTIONS”

FFVoile Prescriptions to RRS 2021-2024  
translated for non-French speaking competitors

FFVoile Prescription to RRS 25.1 (Notice of race, sailing instructions and signals):  
For events graded 4 and 5, standard notices of race and sailing instructions including the specificities of the event shall be used. Events graded 4 may have dispensation for such requirement, after receipt of FFVoile approval, received before the notice of race has been published.

For events graded 5, posting of sailing instructions will be considered as meeting the requirements of RRS 25.1 application.

(\* FFVoile Prescription to RRS 64.4 (Decisions on protests concerning class rules):  
The protest committee may ask the parties to the protest, prior to checking procedures, a deposit covering the cost of checking arising from a protest concerning class rules.

(\* FFVoile Prescription to RRS 67 (Damages):  
Any question or request related to damages arising from an incident occurred while a boat was bound by the Racing Rules of Sailing depends on the appropriate courts and cannot be examined and dealt by a protest committee. A boat that retires from a race or accepts a penalty does not, by that such action, admit liability for damages.

(\* FFVoile Prescription to RRS 70. 5 (Appeals and requests to a national authority):  
The denial of the right of appeal is subject to the written approval of the Fédération Française de Voile, received before publishing the notice of race. This approval shall be posted on the official notice board during the event.

(\* FFVoile Prescription to RRS 76.1 (Exclusion of boats or competitors):  
An organizing authority or race committee shall not reject or cancel the entry of a boat or exclude a competitor eligible under the notice of race and sailing instructions for an arbitrary reason.

(\* FFVoile Prescription to RRS 78.1 (Compliance with class rules; certificates):  
The boat's owner or other person in charge shall, under his sole responsibility, make sure moreover that his boat complies with the equipment and security rules required by the laws, by-laws and regulations of the Administration.

(\* FFVoile Prescription to RRS 86.3 (Changes to the racing rules):  
An organizing authority wishing to change a rule listed in RRS 86.1(a) in order to develop or test new rules shall first submit the changes to the FFVoile, in order to obtain its written approval and shall report the results to FFVoile after the event. Such approval shall be mentioned in the notice of race and in the sailing instructions and shall be posted on the official notice board during the event.

(\* FFVoile Prescription to RRS 88 (Changes to prescriptions):  
Prescriptions of the FFVoile shall neither be changed nor deleted in the notice of race and

sailing instructions, except for events for which an international jury has been appointed. In such case, the prescriptions marked with an asterisk (\*) shall not be changed in the notice of race and sailing instructions. (The official translation of the prescriptions, downloadable on the FFVoile website [www.ffvoile.fr](http://www.ffvoile.fr), shall be the only translation used to comply with RRS 90.2(b)).

(\*) FFVoile Prescription to RRS 91(b) (Protest committee):

The appointment of an international jury meeting the requirements of Appendix N is subject to prior written approval of the Fédération Française de Voile. Such approval shall be posted on the official notice board during the event.

FFVoile Prescription to **APPENDIX R** (*Procedures for appeals and requests*):

Appeals shall be sent to the head-office of Fédération Française de Voile, 17 rue Henri Bocquillon, 75015 Paris – email: [jury.appel@ffvoile.fr](mailto:jury.appel@ffvoile.fr), using preferably the appeal form downloadable on the website of Fédération Française de Voile: <http://espaces.ffvoile.fr/media/127235/formulaire-dappel.pdf>

## Attachment D



## Technical and Safety Rules for Foil-Equipped Crafts

### *Mandatory Provisions for Foil-Equipped Crafts*

- A personal flotation device (PFD) shall be worn in competition, from the departure until the return ashore.
- A helmet shall be worn in competition, from the departure until the return ashore.

**These mandatory provisions are effective from 01 September 2015.**

### *Recommended Provisions for Foil-Equipped Crafts*

- It is recommended to wear A PFD in all circumstances.
- It is recommended to wear a helmet in all circumstances.
- EN 1385 is the recommended standard for helmets.
- It is recommended to wear an impact protection personal clothing or equipment (reinforced insulated suit, reinforced PFD...).
- On sailing racing courses, the racing areas for foils-equipped boats, crafts or boards are, as far as possible, established apart from foreseeable collision courses with other sailboats, crafts, sailboards and other boats, except for boats of race organization, race officials, support persons or safety boats, whose pilots are informed of the actions to be taken in the course of their functions and are equipped accordingly.

**These recommendations are effective immediately.**

The Governing Council (GC) mandates the Executive Board (EB) to adapt these rules if needed, with the necessary responsiveness. In case of substantial changes, the EB's decision will apply as soon as necessary and will be then subsequently validated by the GC. In any case, the EB reports to the next GC on arrangements potentially made in the meantime.

